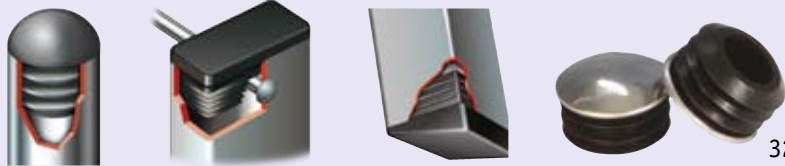


Tube Inserts, Connectors and Ferrules

Tube Inserts



322-333



Threaded Inserts



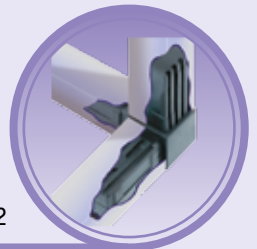
334-339



Tube Connectors



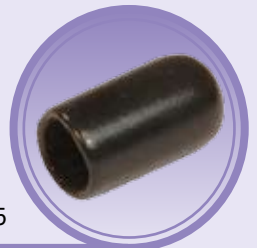
340-342



Ferrules



343-345



Tube Inserts, Connectors and Ferrules

Our threaded, ribbed, and notched tube inserts are available as square and rectangular inserts, or as oval and round tube inserts. Easily fitted, they are available in several materials such as chrome, polyethylene, and LDPE. Our tube connectors provide an ideal method for joining square and round tubing quickly and easily.



Heavy Duty Threaded Inserts

- Designed for use with machine feet
- For high load capacity
- Offers square and round 2 types
- See pages 300 - 301

Extensive range
of inserts for
all your tube
application needs

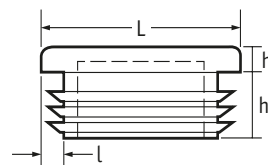


Ribbed Square Inserts

SR 1540

Black and White LDPE

- Ribbed for easy assembly and secure fitting
- Cover sharp tube edges



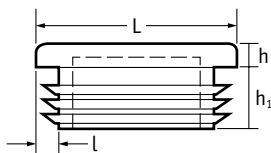
Part Number				Dimensions						Std Pack Qty
Black		White		L (mm)	L (ins)	h (mm)	h1 (mm)	l (mm)	l (gauge)	
Polished	Eroded	Polished	Eroded							
460688	-	-	-	10.0	-	4.0	11.5	1.5 - 2.0	-	2500
-	460689	-	-	12.0	-	4.0	11.5	1.5 - 2.0	-	2500
111193	111211	111229	-	12.7	1/2	4.0	11.5	0.8 - 2.0	14-20	2500
111194	-	-	-	13.0	-	5.0	11.5	0.8 - 2.0	-	2500
111501	111539	-	111615	15.0	-	4.0	11.5	0.8 - 2.0	-	2000
111195	111213	111231	-	16.0	5/8	5.0	11.5	0.8 - 2.5	12-20	2500
11764	-	-	-	18.0	-	5.0	16.5	1.2 - 1.5	-	5000
111196	111214	111232	-	19.0	3/4	5.0	11.5	0.8 - 2.5	10-12	2500
111197	111215	111233	-	20.0	-	5.0	11.5	0.8 - 2.5	-	2500
111198	111216	-	-	22.0	7/8	5.0	11.5	0.8 - 2.5	10-12	2500
111199	111217	111235	-	25.0	-	5.0	11.5	1.0 - 2.5	-	2500
111200	111218	111236	-	25.4	1	5.0	11.5	1.0 - 2.5	12-20	2500
199149	-	199150	-	28.6	1 1/8	5.0	12.4	1.0 - 2.0	16-20	2000
111201	111219	111237	-	30.0	-	5.0	11.5	1.0 - 3.0	-	2000
111502	111540	-	111616	32.0	1 1/4	5.0	11.5	1.0 - 3.0	10-18	1500
111202	111220	111238	-	35.0	1 3/8	5.0	11.5	1.0 - 3.0	10-18	1500
111503	111541	111579	111617	38.0	1 1/2	5.0	14.5	1.0 - 3.0	10-18	1000
111203	111221	111239	-	40.0	-	5.0	14.5	1.0 - 3.0	-	500
199188	-	-	-	44.4	1 3/4	4.7	15.7	1.0 - 2.0	14-18	500
199187	-	-	-	44.4	1 3/4	4.7	15.1	2.0 - 3.0	10-14	500
111204	111222	-	-	45.0	-	5.0	14.5	1.0 - 3.0	-	500
111205	111223	-	-	50.0	-	5.0	14.5	1.0 - 3.0	-	500
-	199274	199868	-	50.0	-	6.6	18.0	3.0 - 5.0	-	500
111206	111224	111242	-	50.8	2	5.0	14.5	1.0 - 3.0	10-18	500
-	466560	-	-	55.0	-	5.0	14.5	2.0 - 4.0	-	400
199211	-	-	-	60.0	-	5.0	24.3	3.0 - 4.0	-	250
111207	111225	111243	-	60.0	-	5.0	14.5	1.0 - 3.0	-	250
111504	111542	-	-	63.5	2 1/2	6.0	14.5	1.0 - 3.0	11-20	250
111505	111543	-	111619	65.0	-	6.0	14.5	1.0 - 3.0	-	250
111208	111226	111244	-	70.0	-	6.0	22.0	2.0 - 4.0	-	150
111506	111544	-	111620	75.0	-	6.0	22.0	2.0 - 4.0	-	200
111507	111545	-	111621	76.2	3	6.0	22.0	2.0 - 4.0	8-14	200
111209	111227	-	111263	80.0	-	6.0	22.0	2.0 - 4.0	-	150
-	460699	-	-	90.0	-	6.0	21.0	3.0 - 5.0	-	100
111210	111228	111246	-	100.0	-	7.0	22.0	2.0 - 4.0	-	100
-	460700	-	-	110.0	-	6.0	24.5	3.0 - 5.0	-	60
-	466558	-	-	120.0	-	5.0	25.0	2.5 - 5.0	-	100
-	466559	-	-	150.0	-	7.0	27.0	5.0 - 8.0	-	75

Ribbed Square Inserts

SR 1540

Mid and Dark Grey LDPE

SPLIT PACKS AVAILABLE



Part Number				Dimensions						Std Pack Qty
Mid-grey		Dark Grey		L (mm)	L (ins)	h (mm)	h1 (mm)	l (mm)	l (gauge)	
Polished	Eroded	Polished	Eroded	L (mm)	L (ins)	h (mm)	h1 (mm)	l (mm)	l (gauge)	Std Pack Qty
111265	-	-	-	12.7	1/2	4.0	11.5	0.8 - 2.0	14-20	2500
-	111691	-	111767	15.0	-	4.0	11.5	0.8 - 2.0	-	2000
111267	-	-	-	16.0	5/8	5.0	11.5	0.8 - 2.5	12-20	2500
111268	111286	-	-	19.0	3/4	5.0	11.5	0.8 - 2.5	12-20	2500
-	111287	-	111323	20.0	-	5.0	11.5	0.8 - 2.5	-	2500
-	111288	-	111324	22.0	7/8	5.0	11.5	0.8 - 2.5	12-20	2500
-	111289	-	111325	25.0	-	5.0	11.5	1.0 - 2.5	-	2500
111272	111290	111308	111326	25.4	1	5.0	11.5	1.0 - 2.5	12-20	2500
-	111291	-	111327	30.0	-	5.0	11.5	1.0 - 3.0	-	2500
-	111692	-	-	32.0	-	5.0	11.5	1.0 - 3.0	-	1500
111655	111693	-	111769	38.0	-	5.0	14.5	1.0 - 3.0	-	1000
-	111293*	-	111329	40.0	-	5.0	14.5	1.0 - 3.0	-	1000
-	-	-	-	44.4	1 3/4	4.7	15.7	2.0 - 3.0	10-14	500
111276	-	-	-	45.0	-	5.0	14.5	1.0 - 3.0	-	2000
111277	111295	111313	111331	50.0	-	5.0	14.5	1.0 - 3.0	-	2000
-	111296	-	-	50.8	2	5.0	14.5	1.0 - 3.0	10-18	2000
111814	-	111816	-	60.0	-	5.0	24.3	3.0 - 4.0	-	250
-	-	-	-	63.5	2 1/2	6.0	14.5	1.0 - 3.0	11-20	250
-	-	-	111771	65.0	-	6.0	14.5	1.0 - 3.0	-	250
-	-	-	111772	75.0	-	6.0	22.0	2.0 - 4.0	-	200
-	111697	-	111773	76.2	3	6.0	22.0	2.0 - 4.0	8-14	200

* Std Pack Qty 500

Coloured Square Inserts

SR 1540

LDPE - Various Colours

- Eroded Head
- Ideal for educational or play equipment



Part Number					Dimensions			Std Pack Qty
Yellow	Red	Green	Blue	Brown	L (mm)	L (ins)	l (mm)	
111844	111845	111846	111847	111848	19.0	3/4	0.8 - 2.5	2500
111871	111872	111873	111874	111875	20.0	-	0.8 - 2.5	2500
111877	111878	111879	111880	111881	25.0	-	1.0 - 2.5	2500
111901	111902	111850	805270	111851	25.4	1	1.0 - 2.5	2500

Lightweight Square Inserts

SR 1542

Black Polyethylene

- Provide neat, finished appearance
- For wall thicknesses of 1.0 - 2.0mm



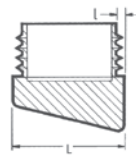
Part Number	Dimensions (mm)			Std Pack Qty
	L	h1	h	
465482	12	9	3	5000
460927	14	10	3	5000
465479	15	11	3	5000
460929	16	10	3	5000
460930	18	10	3	5000
465477	20	11	4	3000
465476	25	15	5	2500
465481	30	15	5	2000
460934	35	15	4	1500
465480	40	16	4	750

Angled Square Inserts

SR 1555

Black Polyethylene

- Easy assembly
- Durable and long lasting
- Perfect for tube ends or uneven surfaces and for tubes which meet surfaces at an angle



Angled Square Inserts (Imperial)

Part Number	Dimensions			Angle	Std Pack Qty
	L (ins)	L (mm)	l (mm)		
199276*	3/4	19.1	1.2-1.6	5°	5000
199277*	3/4	19.1	1.2-1.6	25°	2500
110760	7/8	22.2	1.2-1.6	25°	2500
199318*	7/8	22.2	1.2-1.6	25°	1250

* With stacking buffers

Angled Square Inserts (Metric)

Part Number	Dimensions (mm)			Angle	Std Pack Qty
	L	l	Angle		
460755	15	1.0-2.0	10°	1000	
460766	16	1.0-2.0	10°	1000	
460767	18	1.0-2.0	10°	750	
466557	20	1.0-2.0	10°	500	
199118*	20	1.2	5°	2500	
199134*	20	1.2	25°	2500	
199132	25	1.0-1.5	15°	2500	

* With stacking buffers

Chrome-Plated Square Inserts

SR 1543

Black Polyethylene

- Give neat, polished finish
- Ribbed for ease of fitting and positive fit
- For wall thicknesses of 1.0 - 2.0mm



Part Number	Dimensions (mm)			Std Pack Qty
	L	h1	h	
465341	16	9	2	1000
460959	18	9	2	1000
465340	20	10	2	1000
465343	25	10	2	1000
465342	30	10	3	1000
460964	35	12	3	1000
465344	40	12	3	1000

Domed Square Inserts

SR 1556

Black Polyethylene

- Add attractive finish to high-quality tubular products



Part Number	Dimensions			Std Pack Qty
	L (ins)	L (mm)	l (mm)	
199130	3/4	19.1	0.7-1.2	2500
111525	-	20.0	0.8-2.0	2500
199163#	7/8	22.2	0.9-1.6	1750
199260	1	25.4	0.9-1.6	1250

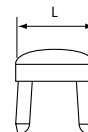
Textured head finish.

Metal-Pronged Square Inserts

SR 1554

Steel

- Useful for fitting into tubular frames before finishing



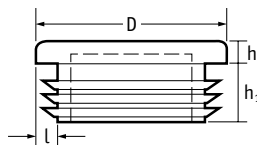
Part Number	Dimensions				Std Pack Qty
	L (mm)	L (ins)	l (gauge)	l (mm)	
PFGS222-16	22.2	7/8	16	1.6	625
PFGS254-16	25.4	1	16	1.6	500
PFGS254-18	25.4	1	18	1.2	500

Standard Round Ribbed Inserts - Black and White

SR 1530

LDPE

- Ribbed for easy assembly and secure fitting
- Provide protection from sharp tube edges



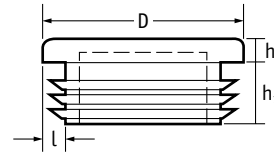
Part Number				Dimensions						Std Pack Qty
Black		White		D (mm)	D (ins)	h (mm)	h1 (mm)	l (mm)	l (gauge)	
Polished	Eroded	Polished	Eroded							
111489	111527	-	111603	10.0	-	3.5	11.5	0.8-2.0	-	2500
111490	111528	-	111604	12.0	-	3.5	11.5	0.8-2.0	-	2500
111033	111053	111073	-	12.7	1/2	4.0	11.5	0.8-2.0	12-20	2500
111034	111054	-	-	13.0	-	4.0	11.5	0.8-2.0	-	2500
-	465609	-	-	14.0	-	5.0	11.5	1.5-2.0	-	2500
-	465610	-	-	15.0	-	3.0	11.5	0.8-2.0	-	2500
111035	111055	111075	-	16.0	5/8	5.0	11.5	0.8-2.0	12-20	5000
111491	111529	-	111605	18.0	-	5.0	11.5	0.8-2.0	-	1500
111036	111056	111076	-	19.0	3/4	5.0	11.5	0.8-2.0	12-20	1500
111037	111057	111077	-	20.0	-	5.0	11.5	0.8-2.0	-	1500
-	465608	-	-	21.0	-	5.0	11.5	0.8-2.0	-	1500
111038	111058	111078	-	22.0	7/8	5.0	11.5	0.8-2.0	12-20	1500
-	465598	-	-	23.0	-	5.0	11.5	0.8-2.5	-	1000
-	465599	-	-	24.0	-	5.0	11.5	1.0-2.5	-	1000
111039	111059	111079	-	25.0	-	5.0	11.5	1.0-3.0	-	1000
111040	111060	111080	-	25.4	1	5.0	11.5	1.0-3.0	10-18	1000
-	460665	-	-	26.0	-	5.0	11.5	1.0-3.0	-	1000
111041	111061	-	-	28.0	-	5.0	12.4	1.0-3.0	-	1000
111042	111062	111082	-	28.6	1 1/8	5.0	11.5	1.0-3.0	10-18	1000
111043	111063	111083	-	30.0	-	5.0	12.4	1.0-3.0	-	1000
111044	111064	111084	-	32.0	1 1/4	5.0	11.5	1.0-3.0	10-18	1000
111045	111065	-	-	34.0	-	5.0	11.5	1.0-3.0	-	1000
111492	111530	-	111606	35.0	-	5.0	11.5	1.0-3.0	-	1500
111493	111531	-	111607	37.0	-	5.0	11.5	1.0-3.0	-	1500
111046	111066	111086	-	38.0	1 1/2	5.0	11.5	1.0-3.0	10-18	1000
199278	-	-	-	38.1	1 1/2	5.0	14.5	2.0-4.0	8-12	1500
111047	111067	-	111107	40.0	-	5.0	11.5	1.0-3.0	-	1000
111495	111533	111571	111609	41.3	1 5/8	5.0	11.5	1.0-3.0	11-20	1000
111494	111532	-	111608	42.0	-	5.0	11.5	1.0-3.0	-	1000
111497	111535	-	111611	44.4	1 3/4	5.0	11.5	1.0-3.0	11-20	1000
111496	111534	-	111610	45.0	-	5.0	11.5	1.0-3.0	-	1000
111498	111536	-	111612	47.6	1 7/8	5.0	11.5	1.0-3.0	11-20	800
111048	111068	-	111108	50.0	-	5.0	14.5	1.0-3.0	-	500
111049	111069	111089	-	50.8	2	5.0	14.5	1.0-3.0	10-18	500
-	465600	-	-	55.0	-	5.0	11.5	1.0-3.0	-	600
111050	111070	-	-	60.0	-	5.0	14.5	1.0-3.0	-	400
199209	-	199832	-	60.0	-	6.0	20.1	3.5-5.0	-	400
-	199268	-	-	63.5	2 1/2	6.0	20.0	2.0-4.0	8-12	400
111500	111538	-	111614	63.5	2 1/2	5.0	14.5	1.0-3.0	11-20	250
111499	111537	-	111613	65.0	-	5.0	14.5	1.0-3.0	-	250
-	465601	-	-	70.0	-	5.0	21.0	2.0-4.5	-	300
111051	111071	-	-	75.0	-	6.0	22.0	2.0-4.0	-	250
-	199271	-	-	76.2	3	6.2	20.2	1.0-2.0	14-18	250
111052	111072	111092	-	76.2	3	6.0	22.0	2.0-4.0	8-14	250
-	465602	-	-	80.0	-	4.0	21.0	1.5-3.0	-	360
-	465603	-	-	85.0	-	6.0	21.0	1.5-4.0	-	250
-	465604	-	-	90.0	-	5.0	20.0	2.5-5.0	-	250
-	465605	-	-	95.0	-	6.0	21.0	1.5-4.0	-	125
-	465606	-	460687	100.0	-	6.0	28.0	2.0-4.5	-	80
-	465596	-	-	105.0	-	6.0	28.0	2.0-4.5	-	100
-	465597	-	-	110.0	-	6.0	28.0	2.0-4.5	-	100
-	465607	-	-	120.0	-	6.0	28.0	2.0-4.0	-	60

CONTINUED ON NEXT PAGE

Standard Round Ribbed Inserts - Mid and Dark Grey

SR 1530

Mid and Dark Grey LDPE



Part Number				Dimensions						Std Pack Qty
Mid Grey		Dark Grey		D (mm)	D (ins)	h	h ₁	l (mm)	l (gauge)	
Polished	Eroded	Polished	Eroded							
	111679		111755	10.0	-	3.5	11.5	0.8-2.0	-	2500
	111680		111756	12.0	-	3.5	11.5	0.8-2.0	-	2500
111113	-			12.7	1/2	4.0	11.5	0.8-2.0	12-20	2500
111115	-	111155		16.0	5/8	5.0	11.5	0.8-2.0	12-20	2500
	111681		111757	18.0	-	5.0	11.5	0.8-2.0	-	1500
111116	-	111156		19.0	3/4	5.0	11.5	0.8-2.0	12-20	1500
-	111137		111177	20.0	-	5.0	11.5	0.8-2.0	-	1500
111118	111138	111158	111178	22.0	7/8	5.0	11.5	0.8-2.0	12-20	1500
111119	-	111159		25.0	-	5.0	11.5	1.0-3.0	-	1500
111120	-	111160		25.4	1	5.0	11.5	1.0-3.0	10-18	1500
-	111141			28.0	-	5.0	11.5	1.0-3.0	-	1500
111122	-	111162		28.6	1 1/8	5.0	11.5	1.0-3.0	10-18	1000
111123	-	111163		30.0	-	5.0	11.5	1.0-3.0	-	1000
-	111144		111184	32.0	-	5.0	11.5	1.0-3.0	-	1000
	111682		111758	35.0	-	5.0	11.5	1.0-3.0	-	1500
	111683		111759	37.0	-	5.0	11.5	1.0-3.0	-	2000
110662	-			38.1	1 1/2	5.0	14.5	2.0-4.0	8-12	1000
111126	-			38.0	1 1/2	5.0	11.5	1.0-3.0	10-18	1000
-	111147		111187	40.0	-	5.0	11.5	1.0-3.0	-	1000
	111685			41.3	1 5/8	5.0	11.5	1.0-3.0	11-20	1000
	111684		111760	42.0	-	5.0	11.5	1.0-3.0	-	1000
	111687		111763	44.4	1 3/4	5.0	11.5	1.0-3.0	11-20	1000
	111686		111762	45.0	-	5.0	11.5	1.0-3.0	-	1000
	111688		111764	47.6	1 7/8	5.0	11.5	1.0-3.0	11-20	800
111128	-	111168	111188	50.0	-	5.0	14.5	1.0-3.0	-	500
111130	-			60.0	-	5.0	14.5	1.0-3.0	-	400
	111690		111766	63.5	2 1/2	5.0	14.5	1.0-3.0	11-20	250

Standard Round Ribbed Inserts - Coloured

SR 1530

LDPE - Various Colours

- Eroded Head
- Ideal for educational or play equipment



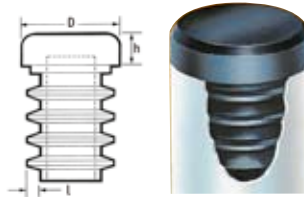
Part Number					Dimensions			Std Pack Qty
Yellow	Red	Green	Blue	Brown	D (mm)	D (ins)	l (mm)	
111818	111820	111821	111822	111823	16.0	5/8	0.8-2.0	2500
111883	111884	111885	111886	111887	18.0	-	0.8-2.0	1500
111906	805197	111907	111908	111825	19.0	3/4	0.8-2.0	1500
111889	111890	111891	111892	111893	20.0	-	0.8-2.0	1500
111870	111827	111828	111909	111911	22.0	7/8	0.8-2.0	1500
111895	111896	111897	111898	111899	25.0	-	1.0-3.0	1000
111830	111831	111832	111833	111834	25.4	1	1.0-3.0	1000
199717	199718	111836	111910	111837	32.0	1 1/4	1.0-3.0	1000

Heavy-Duty Round Inserts

SR 1565

LDPE

- Ideal as heavy-duty feet for tubular products



Black Inserts

Part Number	Dimensions				Std Pack Qty
	D (ins)	D (mm)	l (mm)	h (mm)	
199099	3/4	19.5	1.2 - 2.0	6.4	5000
199100	7/8	22.2	1.2 - 2.0	6.4	2500
199085	1	25.4	1.2 - 2.0	7.9	500
199087	1 1/8	28.5	1.2 - 2.0	7.9	1500
199089	1 1/4	31.7	1.2 - 2.0	15.9	500

Coloured Inserts

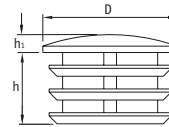
Part Number	Colour	Dimensions			Std Pack Qty
		D (mm)	l (mm)	h (mm)	
464525	red	19.5	1.2 - 2.0	6.4	5000
464526	yellow	19.5	1.2 - 2.0	6.4	5000
464527	white	19.5	1.2 - 2.0	6.4	5000
600304	green	19.5	1.2 - 2.0	6.4	5000
600305	blue	19.5	1.2 - 2.0	6.4	5000
468549	red	22.2	1.2 - 2.0	6.4	2500
468550	yellow	22.2	1.2 - 2.0	6.4	2500
468551	white	22.2	1.2 - 2.0	6.4	2500
464524	green	22.2	1.2 - 2.0	6.4	2500
464616	blue	22.2	1.2 - 2.0	6.4	2500

Chrome-Plated Round Inserts

SR 1562

Black Polyethylene

- Attractive chrome-plated finish provides enhanced aesthetic appearance
- Ribbed for ease of insertion and positive fit



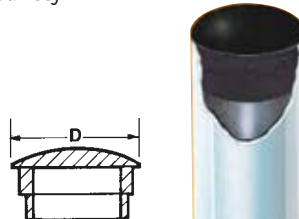
Part Number	Dimensions (mm)				Std Pack Qty
	Wall Thickness	D	h	h1	
465335	1.5	13.0	8.0	2.0	4000
463586	1.5	16.0	10.0	2.0	2000
465333	1.5	18.0	10.0	2.0	2000
465336	1.5	19.0	10.0	2.0	3000
465338	1.5	20.0	10.0	3.0	2000
465334	1.5	22.0	11.0	3.0	2000
462994	1.5	25.0	15.0	3.0	2000
463587	1.5	28.0	15.0	3.0	2000
463020	1.5	30.0	16.0	3.0	2000
463588	1.5	32.0	16.0	3.0	2000
463021	1.5	35.0	16.0	3.0	2000
465337	1.5	38.0	16.0	3.0	1000
463022	1.5	40.0	16.0	3.0	1000
465339	1.5	45.0	16.0	3.0	750
463023	1.5	50.0	12.0	3.0	200
465332	1.5	60.0	12.0	3.0	2000

Lightweight Round Inserts

SR 1560

Black Polyethylene

- Easy assembly
- Offer a high-quality finish to a variety of tubular products
- Imperial range with plain shank
- Metric range with ribbed shank



Plain Shank (Imperial)

Gauge	Part Number		Head Size		Std Pack Qty
	Gauge	Gauge	D		
	(ins)	(mm)	(ins)	(mm)	
16	18	20			
199091	199093	-	1/2	12.7	10000
199004	199006	199008	5/8	15.8	10000
199076	199078	199080	3/4	19.0	5000
199232**	199232**	199232	3/4	19.0	5000
10755	199052	-	7/8	22.2	7000
199069	199070	199071	1	25.4	5000
199072	199073	-	1 1/8	28.6	4000
199067	199068	-	1 1/4	31.7	2500
199119	199120	-	1 3/8	34.9	2500
199083	199084	-	1 1/2	38.1	2000
199030	-	-	1 3/4	44.4	1500
-	11316	-	2	50.8	800

** Ribbed short shank.

Ribbed (Metric)

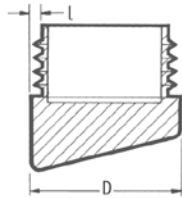
Part Number	Dimensions (mm)				Std Pack Qty
	D	Wall Thickness	Shank Height	Head Height	
466562	10	0.8-1.5	11.5	2	5000
466563	12	1.5-2.0	11.5	2	5000
466564	14	1.5-2.0	11.5	3	5000
466565	15	0.8-2.0	11.5	3	2500
466566	16	0.8-2.0	11.5	3	2500
466567	18	0.8-2.0	11.5	3	2000
466568	19	0.8-2.0	11.5	3	2000
466569	20	0.8-2.5	11.5	3	2000
466570	22	1.0-2.5	11.5	3	2000
466571	24	1.0-2.5	11.5	3	2000
466572	25	1.0-2.5	11.5	3	3500
466573	28	0.8-2.5	11.5	3	3000
466574	30	0.8-2.5	11.5	3	2500
466575	32	0.8-2.5	11.5	3	2250
466576	35	1.0-3.0	11.5	3	1750
466577	38	1.0-3.0	11.5	3	1500
466578	40	1.0-3.0	11.5	3	1500
460789	42	0.8-2.5	11.5	3	1250
466579	45	1.0-3.0	11.5	3	1000
466580	50	1.0-2.5	11.5	3	800
466581	55	1.0-3.0	14.5	3	700
466582	60	1.5-3.0	18.0	3	500

Angled Round Inserts

SR 1555

Black Polyethylene

- Easy assembly
- Durable and long lasting
- Perfect for tube ends or uneven surfaces and for tubes which meet surfaces at an angle



Imperial

Part Number	Dimensions (mm)			Angle	Std Pack Qty
	D		l (mm)		
	(ins)	(mm)			
199032	3/4	19.1	1.6	15°	2000
110356*	3/4	19.1	1.6	15°	4000

* With alignment grooves.

Metric

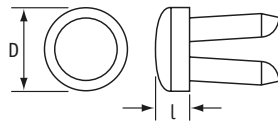
Part Number	Dimensions (mm)		Angle	Std Pack Qty
	D	l		
460751	18	1.5-2.0	15°	1000
465593	20	1.5-2.0	15°	1000
465595	22	1.5-2.0	15°	1000
465594	25	1.5-2.0	15°	1000

Metal-Pronged Round Inserts

SR 1554

Steel

- Useful for fitting into tubular frames before finishing



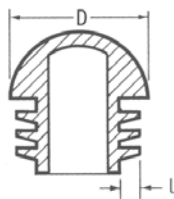
Part Number	Dimensions				Std Pack Qty
	D (ins)	D (mm)	l (gauge)	l (mm)	
PFGR190-16	3/4	19.1	16	1.6	850
PFGR254-16	1	25.4	16	1.6	500
PFGR254-18	1	25.4	18	1.2	500
PFGR317-16	1 1/4	31.7	16	1.6	250

Domed Round Inserts

SR 1555

Black Polyethylene

- Add attractive finish to high-quality tubular products



Imperial (Polished Finish)

Part Number	Dimensions			Std Pack Qty	
	D		l (mm)		
	(ins)	(mm)			
111522	7/8	22.2	14.0-20.0	1.0 - 2.0	4000
199275	1 1/4	31.7	16.0-20.0	1.5 - 2.0	2000

Metric (Textured Finish)

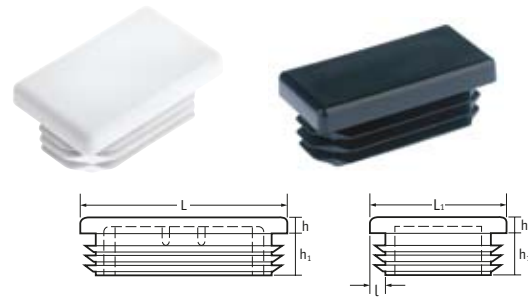
Part Number	Dimensions (mm)		Std Pack Qty
	D	l	
465325	16	1.5-2.0	4000
465324	18	1.5-2.0	4000
111559	20	0.8-2.0	4000
111560	22	0.8-2.0	2000
111561	25	0.8-2.0	2000
465321	28	1.5-2.0	1500
465323	30	1.5-2.0	1000
465322	32	1.5-2.0	1500
111562	35	0.8-2.0	1500
465318	40	1.5-2.0	500

Ribbed Rectangular Inserts

SR 1550

LDPE

- Ideal for most popular sizes and gauges of rectangular tubes



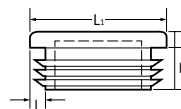
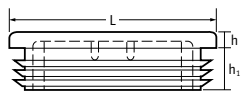
Black & White

Part Number				Dimensions						Std Pack Qty
Black		White		L x L1 (mm)	L x L1 (ins)	h (mm)	h1 (mm)	l (mm)	l (gauge)	
Polished	Eroded	Polished	Eroded							
111337	111354	-	-	20 x 10	-	3.0	11.5	0.8 - 2.0	-	2000
111338	111355	-	-	25 x 10	-	3.0	11.5	0.8 - 2.0	-	2000
-	462363	-	-	25 x 12	-	3.0	11.5	1.0 - 2.0	-	1000
-	465621	-	-	25 x 15	-	5.0	11.5	0.8 - 2.5	-	1000
-	466540	-	-	25 x 20	-	5.0	11.5	1.0 - 3.0	-	1000
111339	111356	-	-	25.4 x 12.7	1 x 1/2	3.0	11.5	0.8 - 2.0	14-20	2000
-	466541	-	-	30 x 10	-	3.0	11.5	0.75 - 2.0	-	1000
199254	-	-	-	30 x 10	-	5.0	12.0	1.0 - 1.5	-	5000
111340	111357	111374	-	30 x 15	-	5.0	11.5	1.0 - 3.0	-	1000
111341	111358	-	-	30 x 20	-	5.0	11.5	1.0 - 3.0	-	1000
-	466542	-	-	30 x 25	-	5.0	13.5	1.5 - 2.0	-	1000
111508	111546	-	111622	34.9 x 15.9	1 3/8 x 5/8	4.0	11.5	1.0 - 3.0	11-20	2500
-	460715	-	-	35 x 10	-	3.5	11.5	0.75 - 2.0	-	1000
111509	111547	-	111623	35 x 20	-	5.0	11.5	1.0 - 3.0	-	2000
111343	111360	111377	-	38.1 x 19.1	1 1/2 x 3/4	5.0	11.5	1.0 - 3.0	10-18	1000
199203	-	-	-	38.1 x 19.1	1 1/2 x 3/4	5.0	11.5	1.0 - 2.0	14-18	2500
111510	111548	-	111624	38.1 x 25.4	1 1/2 x 1	5.0	11.5	1.0 - 3.0	11-20	2000
-	466544	-	-	40 x 15	-	5.0	11.7	1.5 - 2.0	-	1000
111344	111361	111378	-	40 x 20	-	5.0	11.5	1.0 - 3.0	-	1000
111511	111549	-	111625	40 x 25	-	5.0	11.5	1.0 - 3.0	-	1500
111345	111362	-	-	40 x 30	-	5.0	11.5	1.0 - 3.0	-	1000
-	466545	-	-	45 x 15	-	5.0	11.0	1.5 - 2.0	-	1000
-	460722	-	-	45 x 20	-	5.0	11.5	1.0 - 3.0	-	2000
-	460723	-	-	45 x 25	-	5.0	11.5	1.0 - 3.0	-	1250
-	460724	-	-	45 x 30	-	5.0	11.5	1.0 - 2.5	-	1250
111346	111363	-	-	50 x 20	-	5.0	11.5	1.0 - 3.0	-	1000
111347	111364	111381	-	50 x 25	-	5.0	11.5	1.0 - 3.0	-	1000
111349	111366	111383	-	50 x 30	-	5.0	11.5	1.0 - 3.0	-	1000
111512	111550	-	111626	50.8 x 31.8	2 x 1 1/4	5.0	11.5	1.0 - 3.0	11-20	1000
-	466546	-	-	50 x 40	-	5.0	12.0	1.5 - 2.0	-	1000
111348	111365	111382	-	50.8 x 25.4	2 x 1	5.0	11.5	1.0 - 3.0	10-18	1000
111513	111551	-	111627	60 x 20	-	5.0	14.5	1.0 - 3.0	-	1000
18418	18422	-	-	60 x 25	-	5.0	11.5	3.0 - 4.5	-	1000
111481	111482	-	-	60 x 30	-	5.0	14.5	1.0 - 3.0	-	500
111350	111367	111384	111401	60 x 30	-	5.0	14.5	2.0 - 4.0	-	500
111802	111803	-	-	60 x 40	-	5.0	14.5	1.0 - 3.0	-	500
111351	111368	-	-	60 x 40	-	5.0	14.5	2.0 - 4.0	-	500
10913	-	-	-	63.5 x 25.4	2 1/2 x 1	5.0	11.5	1.0 - 2.0	16-18	1000
199184	-	-	-	63.5 x 25.4	2 1/2 x 1	5.5	11.5	1.0 - 2.0	16-18	1000
199238	-	-	-	63.5 x 38.1	2 1/2 x 1 1/2	6.2	18.0	2.0 - 2.5	12-16	500
460726	-	-	-	70 x 20	-	5.0	18.8	1.0 - 2.0	-	500
-	466547	-	-	70 x 25	-	5.0	17.0	1.0 - 2.0	-	500
-	199283	-	-	75 x 25	-	5.0	13.0	1.5 - 2.0	-	500
111514	111552	-	111628	76.2 x 38.1	3 x 1 1/2	6.0	14.5	2.0 - 4.0	8-14	250
111515	111553	-	111629	75 x 50	-	6.0	22.0	2.0 - 4.0	-	250
111516	111554	-	111630	76.2 x 50.8	3 x 2	6.0	22.0	2.0 - 4.0	8-14	250
-	466548	-	-	70 x 30	-	5.7	17.7	1.0 - 2.0	-	500
-	466549	-	-	70 x 40	-	5.0	17.1	1.0 - 2.0	-	500
-	466550	-	-	70 x 50	-	5.0	14.5	2.0 - 5.0	-	350
-	466551	-	-	80 x 20	-	6.0	17.6	1.0 - 2.0	-	600
-	466552	-	-	80 x 25	-	5.0	14.5	1.0 - 2.0	-	550
-	466553	-	-	80 x 30	-	5.0	14.5	1.0 - 2.5	-	500
111473	-	-	-	80 x 40	-	5.0	14.5	1.0 - 3.0	-	250
111352	111369	-	111403	80 x 40	-	5.0	14.5	2.0 - 4.0	-	250
111353	111370	-	-	80 x 50	-	5.0	22.0	2.0 - 4.0	-	250

CONTINUED ON NEXT PAGE

Ribbed Rectangular Inserts *CONTINUED*

SR 1550



Black & White *CONTINUED*

Part Number				Dimensions						Std Pack Qty
Black		White		L x L1 (mm)	L x L1 (ins)	h (mm)	h1 (mm)	l (mm)	l (gauge)	
Polished	Eroded	Polished	Eroded							
-	466554	-	-	80 x 60	-	5.0	24.0	1.5 - 3.5	-	150
-	460735	-	-	90 x 20	-	5.0	14.5	1.5 - 2.0	-	600
-	460736	-	-	90 x 40	-	5.0	14.5	2.0 - 4.0	-	300
-	466555	-	-	90 x 50	-	6.0	21.5	2.0 - 4.5	-	200
-	465611	-	-	100 x 20	-	5.0	14.5	1.5 - 3.0	-	500
-	465612	-	-	100 x 25	-	5.0	14.5	1.5 - 3.0	-	450
-	460740	-	-	100 x 30	-	5.0	14.5	1.5 - 3.5	-	350
-	199231	-	-	100 x 40	-	7.2	19.0	2.0 - 4.0	-	250
-	199195	-	-	100 x 50	-	8.0	18.5	2.0 - 4.0	-	200
-	465613	-	-	100 x 60	-	6.0	24.5	2.5 - 4.5	-	125
-	465614	-	-	100 x 80	-	6.0	24.0	3.0 - 5.0	-	100
-	460743	-	-	120 x 30	-	5.0	14.5	1.0 - 2.5	-	300
-	465616	-	-	120 x 40	-	6.0	21.5	3.0 - 5.0	-	200
-	465617	-	-	120 x 50	-	6.0	21.5	3.0 - 5.5	-	150
111517	111555	-	111631	120 x 60	-	6.0	22.0	2.0 - 4.0	-	100
465618	-	-	-	120 x 80	-	5.0	24.5	2.0 - 3.0	-	75
-	465615	-	-	120 x 100	-	6.0	24.0	3.5 - 6.0	-	60
-	460749	-	-	150 x 50	-	6.0	28.0	2.0 - 4.0	-	100
-	460750	-	-	150 x 100	-	7.0	27.5	3.0 - 8.0	-	100

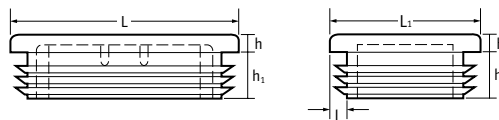


Mid & Dark Grey

Part Number				Dimensions						Std Pack Qty
Mid-grey		Dark Grey		L x L1 (mm)	L x L1 (ins)	h (mm)	h1 (mm)	l (mm)	l (mm)	
Polished	Eroded	Polished	Eroded							
111406	-	-	-	25 x 10	-	3.0	11.5	0.8 - 2.0	-	2000
111408	-	111442	-	30 x 15	-	5.0	11.5	1.0 - 3.0	-	1000
-	-	111443	-	30 x 20	-	5.0	11.5	1.0 - 3.0	-	1000
-	111698	-	111774	34.9 x 15.9	1 3/8 x 5/8	4.0	11.5	1.0 - 3.0	11-20	2500
-	111699	-	111775	35 x 20	-	5.0	11.5	1.0 - 3.0	-	2000
-	111428	-	-	38.1 x 19.1	1 1/2 x 3/4	5.0	11.5	1.0 - 3.0	10-18	1000
-	111700	-	-	38.1 x 25.4	1 1/2 x 1	5.0	11.5	1.0 - 3.0	11-20	2000
-	111429	-	111463	40 x 20	-	5.0	11.5	1.0 - 3.0	-	1000
-	111701	-	111777	40 x 25	-	5.0	11.5	1.0 - 3.0	-	1500
111415	111432	111449	111466	50 x 25	-	5.0	11.5	1.0 - 3.0	-	1000
-	111434	-	111468	50 x 30	-	5.0	11.5	1.0 - 3.0	-	1000
111416	111433	-	111467	50.8 x 25.4	2 x 1	5.0	11.5	1.0 - 3.0	10-18	1000
-	111702	-	-	50.8 x 31.8	2 x 1 1/4	5.0	11.5	1.0 - 3.0	11-20	1000
-	111703	-	111779	60 x 20	-	5.0	14.5	1.0 - 3.0	-	1000
111418	-	111452	-	60 x 30	-	5.0	14.5	2.0 - 4.0	-	500
111806	-	111808	-	60 x 40	-	5.0	14.5	1.0 - 3.0	-	500
111419	-	111453	-	60 x 40	-	5.0	14.5	2.0 - 4.0	-	500
-	111705	-	111781	75 x 50	-	6.0	22.0	2.0 - 4.0	-	250
-	-	-	111782	76.2 x 50.8	3 x 2	6.0	22.0	2.0 - 4.0	8-14	250
-	-	-	111471	80 x 40	-	5.0	14.5	2.0 - 4.0	-	250
-	111707	-	111783	120 x 60	-	6.0	22.0	2.0 - 4.0	-	100

Ribbed Rectangular Inserts *CONTINUED*

SR 1550



Coloured (eroded head)

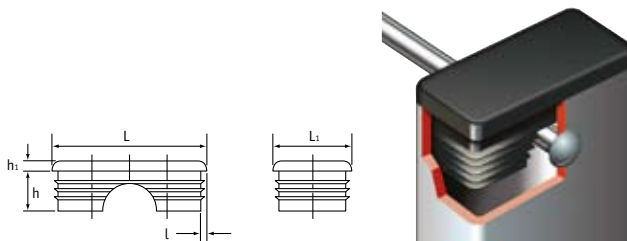
Part Number						Dimensions		Std Pack Qty
Yellow 111859	Red 111860	Green 111861	Blue 111862	Brown 111863	Silver 803895	L x L1 (mm) 50.8 x 25.4	l (mm) 1.0 - 3.0	1000

Centrally-Notched Rectangular Inserts

SR 1550

LDPE

- Ideal for use with fixed-position bolts, screws and studs
- Spark-eroded finish
- Available in a variety of colours
- To suit wall section 1.0-2.0mm



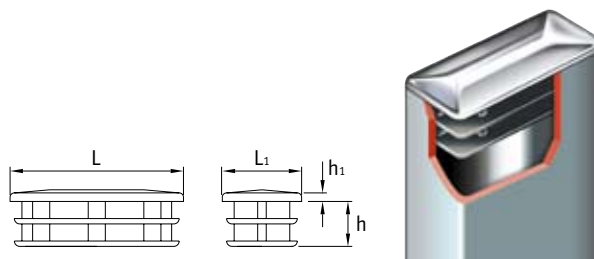
Part Number	Colour	RAL ref.	Dimensions			Std Pack Qty
			L x L1 (mm)	h1 (mm)	h (mm)	
110721	Black	-	50.4 x 25.4	4.5	15.5	1000

Chrome-Plated Cap Rectangular Inserts

SR 1553

Black Polyethylene

- Ribbed for ease of insertion and positive fit
- Chrome-plated cap provides enhanced aesthetic appearance
- To suit wall section 1.0-2.0mm



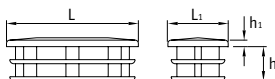
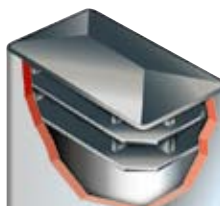
Part Number	Dimensions (mm)			Std Pack Qty
	L x L1	h	h1	
460966	10 x 20	10	1.5	1000
460967	15 x 20	10	2.0	1000
460968	15 x 30	10	2.0	1000
460969	20 x 40	11	2.0	1000

Lightweight Rectangular Inserts

SR 1552

Black Polyethylene

- Ribbed for ease of insertion and positive fit
- Provide neat and attractive finish
- Gauge = 1.0-2.0mm



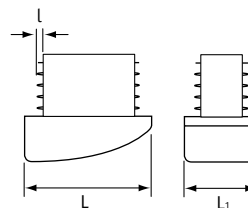
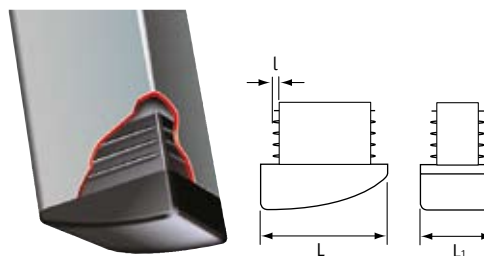
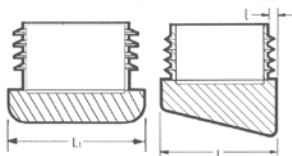
Part Number	Dimensions			Std Pack Qty
	L x L1 (mm)	h (mm)	h1 (mm)	
460936	10 x 20	9	3.0	4000
465474	10 x 40	10	3.0	2500
460937	15 x 20	10	3.5	3000
460939	15 x 30	10	3.5	3000
460942	15 x 40	10	3.5	2000
460940	20 x 30	10	4.0	4000
465473	20 x 40	11	4.0	2000
460944	25 x 40	12	4.0	2000
465475	25 x 50	12	4.0	1500
460945	30 x 40	13	5.0	1500
465472	30 x 50	13	5.0	1000
460950	30 x 100	16	3.0	500

Angled Rectangular Inserts

SR 1555

Black Polyethylene

- Easy assembly
- Durable and long lasting
- Perfect for tube ends or uneven surfaces and for tubes which meet surfaces at an angle



Metric

Part Number	Dimensions			Std Pack Qty
	L x L1 (mm)	l (mm)	Angle	
460769	20 x 15	1.0-2.0	10°	1000
460770	25 x 15	1.0-2.0	10°	750
460771	30 x 15	1.0-2.0	10°	500
10450	30 x 20	1.0-1.5	15°	2500
10451	40 x 20	1.0-1.5	20°	1250

Special Pattern (Metric)

Part Number	Dimensions (mm)		Colour	Std Pack Qty
	L x L1	l		
111564	50 x 25	1.2-2.0	Black	400



We are here to help...

Our Customer Service advisors are friendly, knowledgeable, and ready to help you find the right product for your application.

Call +44 (0) 1865 844572

Ribbed Oval Inserts

SR 1557

Black Polyethylene

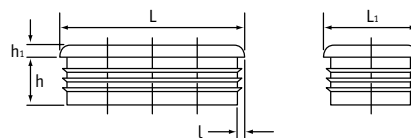
- Easy assembly
- Spark-eroded surface unless otherwise stated
- Secure fixing
- Straight sides



Flat Oval (Metric)

Part Number	Dimensions (mm)		Std Pack Qty
	To Fit Tube Size	Gauge	
460794*	20 x 10	1.5-2.0	4000
111556	30 x 15	0.8 - 2.0	4000
460796	35 x 15	1.2-2.5	3000
460797	35 x 20	1.0-3.0	2500
465578	38 x 20	1.0-3.0	2500
111558	40 x 20	1.0-3.0	2250
460800	50 x 20	1.0-3.0	1500
465579	50 x 25	1.0-2.5	1250
465580	50 x 30	1.0-2.5	1000
465581	60 x 20	1.0-2.0	1000
465582	60 x 30	1.0-2.0	750

* Gloss head finish.



Imperial

Part Number	L x L1 (ins)	l (gauge)	Dimensions (mm)		Std Pack Qty
			h1	h	
111557	1 1/4 x 5/8	11-20	11.5	3.5	3000

Chrome Oval Inserts

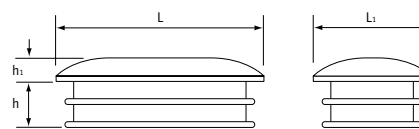
SR 1558

Black Polyethylene

- Add attractive finish to high-quality tubular products
- Chrome-plated cap provides enhanced appearance
- Ribbed for ease of entry and positive fit
- Fit gauge 1.0-1.5mm



Part Number	Dimensions			Std Pack Qty
	L x L1 (mm)	h (mm)	h1 (mm)	
PM0200100	20 x 10	10	2.0	3000
463024	30 x 15	10	2.5	3000
465360	40 x 20	10	3.0	500



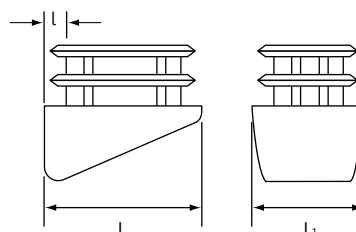
Angled Oval Inserts

SR 1555

Black Polyethylene

- Durable and long lasting
- Perfect for tube ends which meet surfaces at an angle

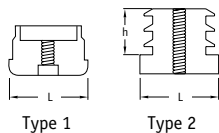
Part Number	Dimensions		Angle	Std Pack Qty
	L x L1 (mm)	l (mm)		
465327	30 x 15	1.2-1.5	12.5°	1000
465326	30 x 15	1.2-1.5	30.0°	2000



Threaded Inserts

SR 1570

- Can be used with either adjustable feet (SR 1572) or adjustable tilt glides (SR 1575)
- M8 and M10 thread sizes available for Type 2
- Suitable for wall thickness of 1.0 - 2.0mm



Square - Type 2 (Metric)

Part Number	Dimensions (mm)		Thread Size	Material	Std Pack Qty
	L	h			
466709	15	18	M8	HDPE	1000
466710	16	18	M8	HDPE	1000
466711	18	18	M8	HDPE	1000
466722	20	18	M8	HDPE	1000
466712	22	18	M8	HDPE	1000
466713	25	19	M8	HDPE	1000
466715	25	19	M10	HDPE	1000
466727	30	20	M8	HDPE	1000
466716	30	20	M10	HDPE	1000
466714	35	21	M10	HDPE	500
466717	40	22	M10	HDPE	500
466720	50	30	M8	HDPE	250
466699	50	30	M10	HDPE	250

Square - Type 1 (Imperial) (Thread Size M8)

Part Number		Dimensions		Material	Std Pack Qty
16 Gauge	18 Gauge	L (ins)	L (mm)		
-	39768	3/4	19.0	HIPS	4000
199412	199412	1	25.4	Nylon	1500
-	39772	1 1/4	31.7	HIPS	600
462389	-	1 1/4	31.7	HIPS	500
-	462390*	1 1/2	38.1	HIPS	250
462391*	-	1 1/2	38.1	HIPS	250

* Thread size M10

Rectangular - Type 2 Metric

Part Number	Dimensions (mm)		Thread Size	Material	Std Pack Qty
	L	h			
466688	20 x 30	19	M8	HDPE	1000
466691	20 x 30	19	M10	HDPE	1000
466723	20 x 35	19	M8	HDPE	1000
466721	20 x 35	19	M10	HDPE	1000
466724	20 x 40	19	M8	HDPE	1000
466700	20 x 40	19	M10	HDPE	1000
466689	20 x 50	19	M8	HDPE	500
466726	20 x 50	19	M10	HDPE	500
466690	20 x 60	19	M8	HDPE	500
465414	20 x 60	19	M10	HDPE	500
466725	25 x 50	22	M8	HDPE	500
466718	25 x 50	22	M10	HDPE	500
462385*	60 x 30	16	M10	LDPE	250

* Plain Shank

Round - Type 1 (Imperial) (Thread Size M8)

Part Number			Dimensions		Material	Std Pack Qty
14 Gauge	16 Gauge	18 Gauge	L (ins)	L (mm)		
-	39761	39762	3/4	19.0	Nylon	1000
-	39765	39765	1 1/4	31.7	Nylon	1000
-	462381	-	1 1/2	38.1	Nylon	1500
462382*	-	-	1 3/4	44.4	Nylon	250

* Thread size M10

Round - Type 2 Metric

Part Number	Dimensions (mm)		Thread Size	Material	Std Pack Qty
	L	h			
462371	16	34	M6	Nylon	3500
462372	16	34	M8	Nylon	3500
466704	18	18	M8	HDPE	1000
466705	20	18	M8	HDPE	1000
462373	20	19	M10	PP	2000
466706	22	19	M8	HDPE	1000
466702	22	19	M10	HDPE	1000
462375	25	33	M6	Nylon	750
466692	25	19	M8	HDPE	1000
466695	25	19	M10	HDPE	1000
466693	28	19	M8	HDPE	1000
466686	28	19	M10	HDPE	1000
466694	30	19	M8	HDPE	1000
466687	30	19	M10	HDPE	1000
466719	32	18	M8	HDPE	1000
466707	32	19	M10	HDPE	1000
466708	35	20	M10	HDPE	500
462377	38	25	M10	Nylon	650
466561	38	38	25	HDPE	250
462379	40	19	M10	PP	500
466696	40	20	M10	HDPE	1000
466697	45	21	M10	HDPE	500
466703	50	20	M8	HDPE	250
466698	50	21	M10	HDPE	500

Material Key
PP = Polypropylene
HIPS = High-Impact Polystyrene

Metal-Threaded Inserts - Standard

SR 1571

HDPE with Steel Nut

- Standard-Duty insert
- Ideal for use with adjustable feet, tilt glides and castors
- Metal thread allows smooth repeatable adjustment

Round

Part Number	Dimensions (mm)				Thread Size	Std Pack Qty
	L	h	h1	l (gauge)		
466242	19	5	20	1.0 - 1.5	M6	1000
466243	20	5	20	1.0 - 1.5	M6	1000
466244	20	5	20	1.0 - 1.5	M8	1000
466245	25	5	20	1.0 - 1.5	M6	1000
466246	25	5	20	1.0 - 1.5	M8	1000
466247	30	5	20	1.0 - 1.5	M8	1000
466248	30	5	20	1.0 - 1.5	M10	1000
466249	32	5	20	1.0 - 1.5	M8	1000
466250	32	5	20	1.0 - 1.5	M10	1000
466251	35	5	20	1.0 - 1.5	M8	500
466252	35	5	20	1.0 - 1.5	M10	500
466253	38	5	20	1.0 - 1.5	M8	500
466254	38	5	20	1.0 - 1.5	M10	500
466255	38	5	20	1.0 - 1.5	M12	500
466256	40	5	20	1.0 - 1.5	M8	250
466257	40	5	20	1.0 - 1.5	M10	250
466258	40	5	20	1.0 - 1.5	M12	500
466262	50	5	20	1.0 - 1.5	M8	500
466263	50	5	20	1.0 - 1.5	M10	250
466264	50	5	20	1.0 - 1.5	M12	500
466265	60	5	20	1.0 - 1.5	M8	500
466266	60	5	20	1.0 - 1.5	M10	250
466267	60	5	20	1.0 - 1.5	M12	250



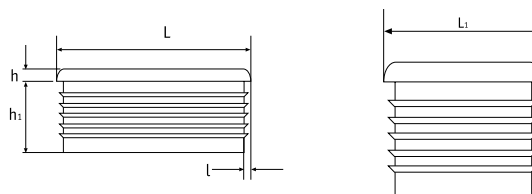
Square

Part Number	Dimensions (mm)				Thread Size	Std Pack Qty
	L	h	h1	l (gauge)		
466268	19	5	20	1.0 - 1.5	M6	1000
466269	20	5	20	1.0 - 1.5	M6	1000
466270	20	5	20	1.0 - 1.5	M8	1000
466271	25	5	20	1.0 - 1.5	M6	1000
466272	25	5	20	1.0 - 1.5	M8	1000
466273	30	5	20	1.0 - 1.5	M8	1000
466274	30	5	20	1.0 - 1.5	M10	1000
466275	35	5	20	1.0 - 1.5	M8	500
466276	35	5	20	1.0 - 1.5	M10	500
466277	40	5	20	1.0 - 1.5	M8	500
466278	40	5	20	1.0 - 1.5	M10	500
466279	40	5	20	1.0 - 1.5	M12	500
466280	50	5	20	1.0 - 1.5	M8	250
466281	50	5	20	1.0 - 1.5	M10	250
466282	50	5	20	1.0 - 1.5	M12	250



Rectangular

Part Number	L x L1 (mm)	Dimensions (mm)			Thread Size	Std Pack Qty
		h	h1	l (gauge)		
466283	30 x 20	5	20	1.0 - 1.5	M8	1000
466284	30 x 20	5	20	1.0 - 1.5	M10	1000
466285	40 x 20	5	20	1.0 - 1.5	M8	500
466286	40 x 20	5	20	1.0 - 1.5	M10	500
466287	40 x 30	5	20	1.0 - 1.5	M8	500
466288	40 x 30	5	20	1.0 - 1.5	M10	500
466289	50 x 25	5	20	1.0 - 1.5	M8	500
466290	50 x 25	5	20	1.0 - 1.5	M10	500
466291	50 x 30	5	20	1.0 - 1.5	M8	500
466292	50 x 30	5	20	1.0 - 1.5	M10	500
466293	60 x 30	5	20	1.0 - 1.5	M8	250
466294	60 x 30	5	20	1.0 - 1.5	M10	250



Horizontal Fitting - Plastic with Metal Nut

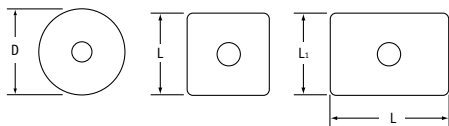
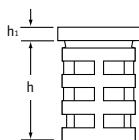
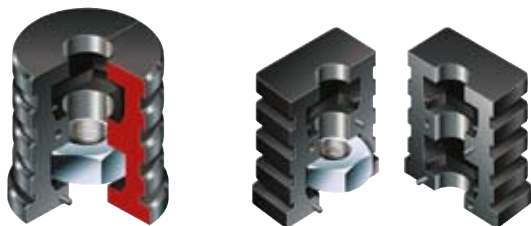
Part Number	Tube Size (mm)	Shape	Wall Thickness (mm)	Thread Size	Std Pack Qty
PZHS254-18M08	25.4 x 25.4	Square	1.2	M8	1000

Metal-Threaded Inserts

SR 1571

Black Nylon 6 or HDPE

- Heavy-duty insert
- Ideal for use with adjustable feet, tilt glides and castors
- M8 or M10 thread with mild steel holding nut provides strong fixing
- Metal thread allows smooth repeatable adjustment
- Two-piece mouldings fit neatly together to fit into tubes



Nylon Square Inserts (two piece moulding)

Part Number	Thread Size	Dimensions (mm)				Std Pack Qty
		Gauge	L	h ₁	h	
461351	M8	1.5	20	5	35	500
461352	M8	1.5	25	5	35	500
461353	M8	1.5	30	5	35	400
461357	M8	2.0	30	5	35	400
461354	M10	1.5	25	5	35	500
461355	M10	1.5	30	5	35	400
461358	M10	2.0	30	5	35	400
461359	M10	2.0	35	5	35	400
461356	M10	1.5	40	5	37	320
461360	M10	2.0	40	5	35	320

Nylon Rectangular Inserts (two piece moulding)

Part Number	Thread Size	Dimensions (mm)				Std Pack Qty
		Gauge	L x L ₁	h ₁	h	
461375	M8	1.5	40 x 20	5	35	500
461376	M10	2.0	50 x 25	5	35	350

Nylon Round Inserts (two piece moulding)

Part Number	Thread Size	Dimensions (mm)				Std Pack Qty
		Gauge	D	h ₁	h	
461361	M8	1.5	25	5	35	500
461367	M8	2.0	30	5	35	500
461368	M8	2.0	32	5	35	500
461369	M8	2.0	40	5	35	300
461362	M10	1.5	25	5	35	500
461370	M10	2.0	30	5	35	500
461371	M10	2.0	32	5	35	500
461363	M10	1.5	35	5	35	300
461372	M10	2.0	35	5	35	300
461364	M10	1.5	38	5	38	300
461365	M10	1.5	40	3	34	300
461373	M10	2.0	40	5	35	300
461366	M10	1.5	50	5	35	200
461374	M10	2.0	50	5	35	200



HDPE Square Inserts

Part Number	Dimensions (mm)			Std Pack Qty
	L	Gauge	Thread Size	
PZMN300-1020M08	30	1.0 - 2.0	M8	500
PZMN300-1020M10	30	1.0 - 2.0	M10	500
PZMN400-RM10B	40	1.0 - 2.0	M10	250

HDPE Rectangular Inserts

Part Number	Dimensions (mm)			Std Pack Qty
	L x L ₁ (mm)	Gauge	Thread Size	
PZMT500250-RM10	50 x 25	1.0 - 2.0	M10	250

HDPE Round Inserts

Part Number	Dimensions (mm)		Thread Size	Std Pack Qty
	D	Gauge		
PZMR250-15RM08B	25	1.5	M8	500
PZMR250-15RM10B	25	1.5	M10	500

Extra Long HDPE Square Inserts

Part Number	Dimensions (mm)		Thread Size	Std Pack Qty
	L	Gauge		
PZML250-RM08B	25	1.0 - 2.0	M8	500
PZML250-RM10B	25	1.0 - 2.0	M10	250
PZML300-RM10B	30	1.0 - 2.0	M10	250

Threaded Metal Bush HDPE Square Inserts

Part Number	Dimensions (mm)		Thread Size	Std Pack Qty
	L	Gauge		
PZMS200-RM08B	20 x 20	1.0 - 2.0	M8	1000
PZMS250-RM08B	25 x 25	1.0 - 2.0	M8	500
PZMS250-RM10B	25 x 25	1.0 - 2.0	M10	500

Standard Non-Articulating Adjustable Feet

SR 1572

Black Polypropylene

- Outer-Hex Slotted Head for adjustment
- POZI socket in base for easy adjustment



25mm Diameter Foot

Part Number		Stud Length	Std Pack Qty	
M6	M8		M6	M8
466121	-	20	500	-
-	466122	25	-	500
-	466123	40	-	350
-	466124	55	-	250
-	466125	70	-	200
-	466126	100	-	150

30mm Diameter Foot

Part Number		Stud Length	Std Pack Qty	
M8	M10		M8	M10
466127	466132	25	400	300
466128	466133	40	300	200
466129	466134	55	200	100
466130	466135	70	150	100
466131	466136	100	100	50

38mm Diameter Foot

Part Number			Stud Length	Std Pack Qty		
M8	M10	M12		M8	M10	M12
466137	466142	466147	25	400	300	200
466138	466143	466148	40	300	200	150
466139	466144	466149	55	200	100	150
466140	466145	466150	70	150	100	100
466141	466146	466151	100	100	50	50

48mm Diameter Foot

Part Number			Stud Length	Std Pack Qty		
M8	M10	M12		M8	M10	M12
466152	466157	466162	25	300	200	150
466153	466158	466163	40	200	150	100
466154	466159	466164	55	150	100	100
466155	466160	466165	70	150	100	200
466156	466161	466166	100	100	50	50

Standard Articulating Adjustable Feet

SR 1572

Black Polypropylene

- Allow adjustment under load with base remaining stationary
- Outer-Hex Slotted Head for adjustment
- POZI socket in base for rapid assembly



25mm Diameter Foot

Part Number		Stud Length	Std Pack Qty	
M6	M8		M6	M8
466212	-	20	500	-
-	466167	25	-	500
-	466168	40	-	350
-	466169	55	-	250
-	466170	70	-	200
-	466171	100	-	150

30mm Diameter Foot

Part Number		Stud Length	Std Pack Qty	
M6	M8		M6	M8
466172	466177	25	400	300
466173	466178	40	300	200
466174	466179	55	200	100
466175	466180	70	150	100
466176	466181	100	100	50

38mm Diameter Foot

Part Number			Stud Length	Std Pack Qty		
M8	M10	M12		M8	M10	M12
466182	466187	466192	25	400	300	200
466183	466188	466193	40	300	200	150
466184	466189	466194	55	200	100	150
466185	466190	466195	70	150	100	100
466186	466191	466196	100	100	50	50

48mm Diameter Foot

Part Number			Stud Length	Std Pack Qty		
M8	M10	M12		M8	M10	M12
466197	466202	466207	25	300	200	150
466198	466203	466208	40	200	150	100
466199	466204	466209	55	150	100	100
466200	466205	466210	70	150	100	50
466201	466206	466211	100	100	50	50

All-Metal Threaded Inserts

SR 1567

Cast Aluminium Alloy

- For heavy-duty applications



Round (Metric)

Part Number	Tube Size (mm)	Gauge (mm)	Thread Size	Std Pack Qty
PZAR320-15M10	32	1.5	M10	200
PZAR320-2M10	32	2.0	M10	250

Square (Metric)

Part Number	Tube Size (mm)	Gauge (mm)	Thread Size	Std Pack Qty
PZAS250-15M10	25 x 25	1.5	M10	200
PZAS250-2M10	25 x 25	2.0	M10	200
PZAS300-15M10	30 x 30	1.5	M10	200
PZAS300-2M10	30 x 30	2.0	M10	200
465498	30 x 30	2.5	M10	200
PZAS300-2M12	30 x 30	2.0	M12	200
PZAS400-15M10	40 x 40	1.5	M10	100
466585	40 x 40	2.0	M10	100
466584	40 x 40	2.5	M10	100

Rectangular (Metric)

Part Number	Tube Size (mm)	Gauge (mm)	Thread Size	Std Pack Qty
PZAT500250-2M10	50 x 25	2.0	M10	135
PZAT500300-2M10	50 x 30	2.0	M10	125
PZAT600300-2M10	60 x 30	2.0	M10	100
PZAT600300-25M1	60 x 30	2.5	M10	150

Rectangular (Imperial)

Part Number	Tube Size (mm)	Gauge (mm)	Thread Size	Std Pack Qty
PZAT508254-20M1	50.8 x 25.4	2.0	M10	200

All-Metal Threaded Inserts - Steel

SR 1567

Steel

- For heavy-duty applications



Round (Imperial)

Part Number	Tube Size (mm)	Tube Size (ins)	Gauge (mm)	Gauge	Thread Size	Std Pack Qty
PZFR254-16M10	25.4	1	1.6	16	M10	500
PZFR317-16M10	31.7	1 1/4	1.6	16	M10	250

Square (Imperial)

Part Number	Tube Size (mm)	Tube Size (ins)	Gauge (mm)	Gauge	Thread Size	Std Pack Qty
PZFL254-18M08*	25.4 x 25.4	1 x 1	1.2	18	M8	500
PZFS254-16M10	25.4 x 25.4	1 x 1	1.6	16	M10	250

* Light-duty style threaded, no bush.

Hinged Threaded Insert

SR 1570

Black Nylon 6

- Insert into metal panel
- Use in conjunction with M8 adjustable foot or tilt glide



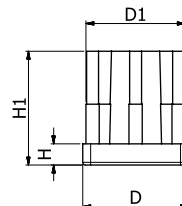
Part Number	Dimensions (mm)		Std Pack Qty
	d	D	
199479	8	20	5000

Heavy Duty Square Threaded Inserts

SR 5437

Nylon with Nickel Plated Brass or Stainless Steel Inserts

- Interference fit
- Designed for use with machine feet
- Heavy duty for high load capacity



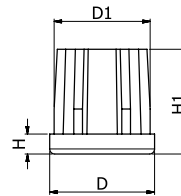
Part Number		Gauge (mm)	Thread Size	Dimensions (mm)				Maximum Static Load N	Std Pack Qty
Nickel Plated Brass Insert	Stainless Steel Insert			D	D1	H	H1		
493605	493622	1.5	M10	30	27.5	6	33	5500	24
493606	493623	1.5	M12	30	27.5	6	33	5500	24
493607	493624	1.5	M16	30	27.5	6	33	5500	24
493608	493625	1.5	M10	40	37.5	8	43	8000	24
493609	493626	1.5	M12	40	37.5	8	43	8000	24
493610	493627	1.5	M16	40	37.5	8	43	8000	24
493611	493628	1.5	M20	40	37.5	8	43	8000	24
493612	493629	2.0	M10	40	36.5	8	43	8000	24
493613	493630	2.0	M12	40	36.5	8	43	8000	24
493614	493631	2.0	M16	40	36.5	8	43	8000	24
493615	493632	2.0	M20	40	36.5	8	43	8000	24
493616	493633	1.5	M12	50	47.5	10	55	9500	16
493617	493634	1.5	M16	50	47.5	10	55	9500	16
493618	493635	1.5	M20	50	47.5	10	55	9500	16
493619	493636	2.0	M12	50	45.5	10	55	9500	16
493620	493637	2.0	M16	50	45.5	10	55	9500	16
493621	493638	2.0	M20	50	45.5	10	55	9500	16

Heavy Duty Round Threaded Inserts

SR 5438

Nylon with Nickel Plated Brass or Stainless Steel Inserts

- Interference fit
- Designed for use with machine feet
- Heavy duty for high load capacity

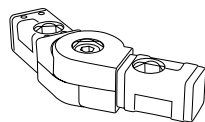


Part Number		Gauge (mm)	Thread Size	Dimensions (mm)				Maximum Static Load N	Std Pack Qty
Nickel Plated Brass Insert	Stainless Steel Insert			D	D1	H	H1		
493639	493656	1.0	M10	30	28.5	6	35	3200	24
493640	493657	1.0	M12	30	28.5	6	35	3200	24
493641	-	1.0	M16	30	28.5	6	35	3200	24
493642	493658	1.5	M10	38	35.5	8	43	5500	24
493643	493659	1.5	M12	38	35.5	8	43	5500	24
493644	493660	1.5	M16	38	35.5	8	43	5500	24
493645	-	1.5	M10	42	39.5	8	42	6500	24
493646	493661	1.5	M12	42	39.5	8	42	6500	24
493647	493662	1.5	M16	42	39.5	8	42	6500	24
493648	493663	1.5	M20	42	39.5	8	42	6500	24
493649	-	1.5	M10	48	45.5	11	49	8000	24
493650	493664	1.5	M12	48	45.5	11	49	8000	24
493651	493665	1.5	M16	48	45.5	11	49	8000	24
493652	493666	1.5	M20	48	45.5	11	49	8000	24
493653	493667	1.5	M12	50	47.5	11	49	8500	24
493654	493668	1.5	M16	50	47.5	11	49	8500	24
493655	493669	1.5	M20	50	47.5	11	49	8500	24

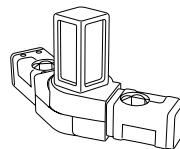
Hinged Tube Connectors

SR 1532

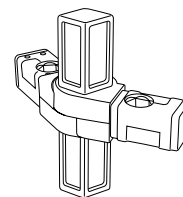
Black Nylon



Type 1



Type 2



Type 3



Part Number	Type	Tube Size (mm)	Angle Range (degrees)	Std Pack Qty
463683	1	25	45 - 195	200
463684*	1	25	45 - 195	200
463685	1	30	45 - 200	100
463686	2	25	45 - 195	100
463687*	2	25	45 - 195	100
463688	2	30	45 - 200	80
463689	3	25	45 - 195	100
463690*	3	25	45 - 195	100
463691	3	30	45 - 200	80

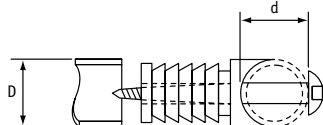
* 24 locking positions for secure fixing

Radius Tube Connectors

SR 1503

Black Nylon

- Ideal for making T-joints with round tubes
- Design suitable for use with tubes of the same or different dimensions



Black Nylon

Part Number	Dimensions (mm)			Std Pack Qty
	D	Gauge	d	
CPR190-10190B	19.0	1.0	19.0	250
CPR190-15190B	19.0	1.5	19.0	250
CPR250-15250B	25.0	1.5	25.0	250
CPR250-15280B	25.0	1.5	28.0-32.0	250

Socket Head Screw

- Required for fixing connectors and tubes securely

Part Number	Dimensions (mm)		Std Pack Qty
	Length	Screw Dia	
CPR81181	50.0	5.0	250

Hose & Tube Connectors

SR 1935

Natural HDPE



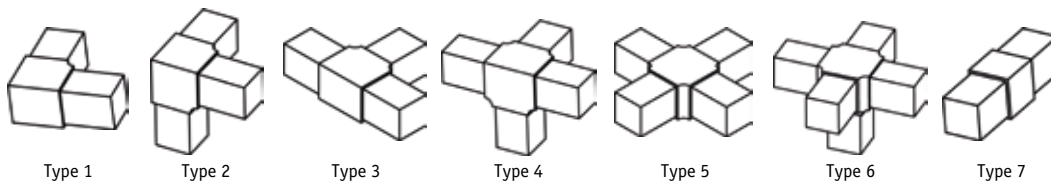
- Ideal for both plastic and rubber flexible tubing

Part Number	Type	For tube with I/D (mm)	Std Pack Qty
12828	T-Shape	6.0	10000
199053	Y-Shape	11.0	2000

Multi-Way Tube Connectors for Square Tubes

SR 1509

Black Nylon with or without Steel Core



Black Nylon

Part Number	Dimensions		Type	Std Pack Qty
	Tube Size (mm)	Gauge (mm)		
463704	20	1.5	1	100
463705	20	1.5	2	50
490981	20	1.5	3	500
463706	20	1.5	4	50
490982	20	1.5	5	350
463707	20	1.5	6	50
490991	20	1.5	7	900
461347	25	1.5	1	100
461348	25	1.5	2	50
CIT-250-15-3WFN	25	1.5	3	200
461349	25	1.5	4	50
490983	25	1.5	5	125
461350	25	1.5	6	50
464538	25	1.5	7	300
461910	30	2.0	1	100
461911	30	2.0	2	50
490984	30	2.0	3	100
461912	30	2.0	4	50
490985	30	2.0	5	100
461913	30	2.0	6	50
490993	30	2.0	7	250

Black Nylon with Metal Core

Part Number	Dimensions		Type	Std Pack Qty
	Tube Size (mm)	Gauge (mm)		
463708	20	1.5	1	100
463709	20	1.5	2	50
490986	20	1.5	3	200
463710	20	1.5	4	50
490987	20	1.5	5	150
463711	20	1.5	6	50
490992	20	1.5	7	50
CIT-250-15-2W	25	1.5	1	100
CIT-250-15-3WC	25	1.5	2	50
CIT-250-15-3WF	25	1.5	3	50
CIT-250-15-4W	25	1.5	4	50
CIT-250-15-4WF	25	1.5	5	50
CIT-250-15-5W	25	1.5	6	50
462364	25	1.5	7	100
CIT-300-02-2W	30	2.0	1	100
CIT-300-02-3WC	30	2.0	2	75
490988	30	2.0	3	120
CIT-300-02-4W	30	2.0	4	50
490989	30	2.0	5	60
490990	30	2.0	6	90
462365	30	2.0	7	75

NB: Connectors are supplied in two parts, held together when fitted.

Multi-Way Tube Connectors for Round Tubes

SR 1503

Black PE or Nylon

- Ideal for popular sizes of round tubing

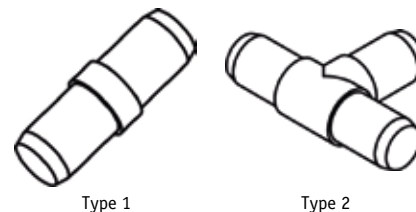
Imperial without Metal Core (PE)

Part Number	To Fit Tube Size		Type	Std Pack Qty
	Dia (ins)	Gauge		
10712*	3/4	16/18	1	2000
199470	7/8	20	1	1000
600953	1	18	1	500
199469	1 1/4	20	1	500

* High-density polyethylene.

Metric with Metal Core (Nylon)

Part Number	Dimensions		Type	Std Pack Qty
	Tube Size (mm)	Gauge (mm)		
463696	20	1.5	1	325
463692	25	1.0	2	120
463698	25	1.5	1	250
463700	30	1.5	1	125
463694	32	1.0	2	50
463702	32	1.5	1	125



Type 1

Type 2



Metric without Metal Core (Nylon)

Part Number	Dimensions		Type	Std Pack Qty
	Tube Size (mm)	Gauge (mm)		
463697	20	1.5	1	1200
463693	25	1.0	2	120
463699	25	1.5	1	800
463701	30	1.5	1	500
463695	32	1.0	2	100
463703	32	1.5	1	400

Tube Adjusters with Thumb Screw

SR 1503

Nylon

- For fixing telescopic tubes in position



Part Number	To Fit Tube Size	Colour	Std Pack Qty
462366	1/2" & 5/8"	Black	1000
199510	5/8" & 3/4"	Natural	1000
199513	5/8" & 3/4"	Black	1000
199528	5/8" & 20mm	Natural	1000
199516	3/4" & 7/8"	Natural	1500
199519	3/4" & 7/8"	Black	1000
199522	1" & 7/8"	Natural	1000
199525	1" & 7/8"	Black	1000

Anti-Rattle Rings

SR 1508

Black or Grey PVC

- Ideal for finishing telescopic tubes

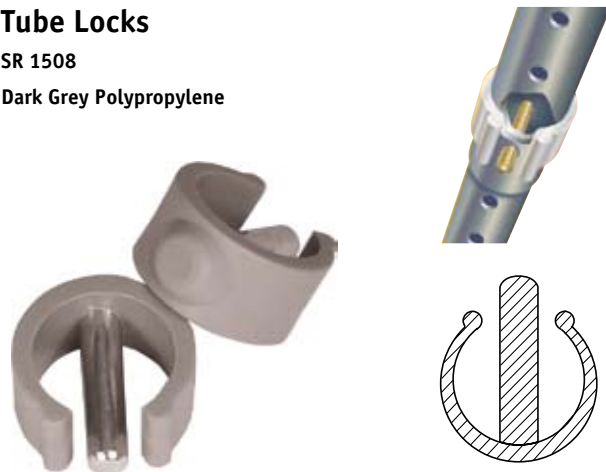


Part Number		Fits Tube Size	Std Pack Qty
Black	Grey		
199466	199467	7/8" - 3/4"	1250
199452	199453	1" - 7/8"	2500

Tube Locks

SR 1508

Dark Grey Polypropylene



- Secure two telescopic tubes in place
- Metal pin provides additional strength
- Reusable
- Easy to install by drilling 1/4" hole through tube, to enable tube lock to snap into place

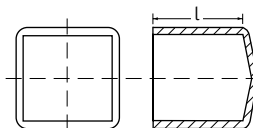
Part Number	To Fit Tube Size	To Fit Tube Size (mm)	Dimensions (mm)		Std Pack Qty
			Pin Diameter	Pin Length	
49160	3/4" - 7/8"	19.1 - 22.2	6	25	1000
49161	7/8" - 1"	22.2 - 25.4	6	28	1000

Square Gloss Caps

SR 1523

Black Flexible PVC

- Ideal for finishing tubular products
- Flexible and easy to fit
- Give attractive gloss finish
- Yellow caps available for applications requiring temperature resistance up to +210°C



Part Number			To Fit Tube Size		Std Pack Qty		
L = 15mm	L = 25mm	L = 40mm	(mm)	(ins)	L = 15mm	L = 25mm	L = 40mm
SQWA-0159-015	SQWA-0159-025	-	16.0	5/8	2500	2500	-
SQWA-0190-015	-	-	19.0	3/4	2500	2000	-
SQWA-0200-015	SQWA-0200-025	-	20.0	-	5000	1250	-
SQWA-0250-015	SQWA-0250-025	-	25.0	1	1250	1000	-
-	SQWA-0300-025	SQWA-0300-040	30.0	-	-	1000	500
-	SQWA-0400-025	SQWA-0400-040	40.0	-	-	500	400
-	SQWA-0500-025	SQWA-0500-040	50.0	2	-	400	200

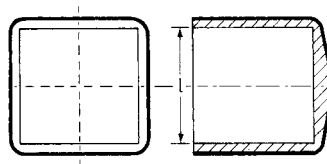
For yellow temperature-resistant material, replace code WA in part number with YJ.

Square Ferrules

SR 1521

Black LDPE

- Ideal for popular sizes of square tubes



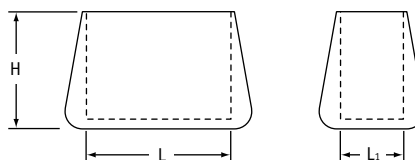
Part Number	L		Std Pack Qty
	(ins)	(mm)	
199019	5/8	15.8	4000
10225	3/4	19.0	3000
199257	7/8	22.2	2000
199010	1	25.4	1000
199223	2	50.8	250

Oval Ferrule

SR 1522

Black PVC

- Provide neat finish to oval-shaped tubes
- Cover sharp tube edges
- Flexible and easy to fit



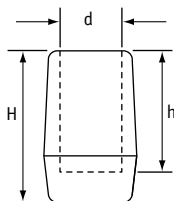
Part Number	Dimensions (mm)		Std Pack Qty
	L x L1	H	
465370	30 x 15	24.0	1500

Heavy-Duty Round Ferrules

SR 1516

Black PVC

- Heavy-duty ferrule with flat thick base
- Ideal for protecting tubular products
- Thick base gives extra protection from rough edges



Part Number	Dimensions (mm)			Std Pack Qty
	d	H	h	
465365	10.0	28.0	22.0	2000
465367	12.0	31.0	24.0	2000
465366	16.0	36.0	29.0	1000
465369	18.0	38.0	31.0	1000
465368	20.0	40.0	33.0	750

Gloss End Tips

SR 1506

Flexible PVC

- Choice of black or white
- Durable high-gloss, smooth finish
- Ideal finish for product presentation and protection



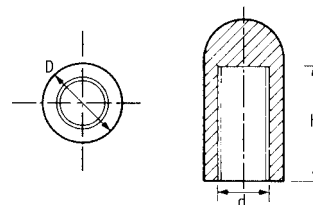
Part Number	Internal Diameter	Dimensions (mm)		Std Pack Qty
		Internal Diameter	Internal length	
FCWA-0024-013	FCWB-0024-013	2.4	13.0	5000
FCWA-0032-013	FCWB-0032-013	3.2	13.0	5000
FCWA-0040-013	FCWB-0040-013	4.0	13.0	5000
FCWA-0048-014	FCWB-0048-014	4.8	14.0	5000
FCWA-0060-010	FCWB-0060-010	6.0	10.0	5000
FCWA-0060-013	FCWB-0059-013	6.0	13.0	5000
FCWA-0064-013	FCWB-0064-013	6.4	13.0	5000
FCWA-0079-013	FCWB-0079-013	7.9	13.0	5000
FCWA-0095-013	FCWB-0095-013	9.5	13.0	5000

End Tips

SR 1500

PVC

- Choice of black or white
- Add protection or a neat finish to a wide range of applications



Part Number		Dimensions (mm)			Std Pack Qty
Black	White	d	h	D	
10461	50987	2.4	6.6	5.6	20000
11343	10395	2.7	12.2	6.3	20000
110476	110477	3.0	9.7	5.5	20000
12351	-	3.2	5.1	5.5	20000
11227	10393	3.2	14.2	7.0	20000
11794	61797	3.2	9.7	5.5	20000
12352	50256	4.0	13.3	6.2	20000
110593	110596	4.0	9.2	5.5	20000
10565	50288	4.8	14.2	7.0	20000
10870	12889	5.0	20.3	7.9	10000
199462	-	6.0	11.0	8.5	20000
10427	51237	6.3	15.5	8.7	10000
51033*	-	6.4	10.4	7.9	20000
12635*	-	6.4	13.2	9.5	10000
12888	10855	7.0	18.0	9.8	10000
10283	51378	7.6	17.0	11.0	10000
51320*	-	7.9	13.2	9.5	20000
12355	10384	8.0	24.2	10.5	10000
51114*	51297	9.5	13.3	11.1	15000

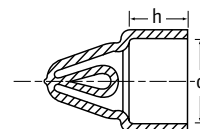
* Flat head

Hanger Caps

SR 1512

Black Flexible PVC

- Attractive caps with convenient hanger
- Flexible for easy fitting
- Weather resistant



Part Number	Dimensions			Std Pack Qty
	d	h		
HCWA-0222-030	7/8	22.2	30	2000
HCWA-0254-030	1	25.4	30	1500

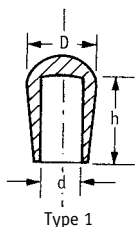


Tapered Ferrules

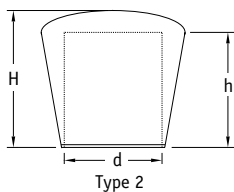
SR 1520

PVC

- Choice of black or white
- Ideal as protective cap for protruding wire, steel rods or bars
- Give neat finish to tubular products
- Flexible for easy fitting



Type 1



Type 2



Type 1 (Imperial) - Black

Part Number	Dimensions						Std Pack Qty
	d		D		h		
	(ins)	(mm)	(ins)	(mm)	(ins)	(mm)	
50323	3/16	4.8	13/32	10.3	15/32	11.9	10000
50379	1/4	6.3	13/32	10.3	15/32	11.9	10000
12923	5/16	7.9	1/2	12.7	9/16	14.3	10000
60423*	5/16	7.9	33/64	15.5	29/32	20.0	5000
50978	3/8	9.5	19/32	15.1	5/8	15.8	2500
51110*	1/2	12.7	47/64	18.6	29/32	23.0	4000

* Low-density polyethylene.

Type 2 (Metric)

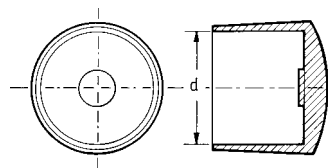
Part Number		Dimensions (mm)			Std Pack Qty
Black	White	d	H	h	
465441	600240	4.0	11.0	9.0	5000
465444	600243	5.0	13.0	10.0	5000
465435	600238	6.0	14.0	11.0	5000
465439	600246	8.0	16.0	13.0	5000
465436	600241	10.0	18.0	14.0	5000
465440	600248	12.0	21.0	17.0	3000
465438	600239	14.0	23.0	18.0	2000
460870	460880	16.0	25.0	20.0	2000
465443	600247	18.0	27.0	22.0	2000
465434	600245	20.0	30.0	24.0	1000
465433	600244	22.0	32.0	26.0	1000
465437	600242	25.0	36.0	30.0	750
465447	600233	28.0	38.0	32.0	500
465446	-	30.0	41.0	34.0	500
465442	600250	32.0	43.0	39.0	400
465445	-	35.0	47.0	40.0	250

Round Ferrules

SR 1510

LDPE

- Choice of black or white
- Gives neat finish to tubular products
- Gloss finish as standard



Imperial

Part Number		d		Std Pack Qty
Black	White	(ins)	(mm)	
51216	-	7/16	11.1	10000
10497	50829	1/2	12.7	10000
52047	52048	5/8	15.8	5000
10260	10258	3/4	19.0	4000
11761#	-	3/4	19.0	2500
10257	10256	7/8	22.2	2500
10265	10263	1	25.4	1500
50248	10519	1 1/16	26.9	600
12000	52001	1 3/8	28.6	1200
11143	12358	1 1/4	31.7	800
199124	-	1 3/8	34.9	1000
199050	-	1 1/2	38.1	500
199039	-	1 3/4	44.4	500
199205	-	2	50.8	300
199082	-	3	76.2	150

Heavy-duty ferrule.

Metric

Part Number		d	Std Pack Qty
Black	White	(mm)	
460843	-	15.0	2000
460844	460854	16.0	2500
465377	465374	18.0	2500
465373	600252	20.0	2000
460847	460857	22.0	2000
460848	460858	24.0	2000
465372	465483	25.0	2000
460850	460860	26.0	2000
465376	-	28.0	2000
465375	465371	30.0	1500